



# SAFARI GROUP NEWSLETTER

APRIL 2019

## WYNDHAM GARDENS CHRISTCHURCH

Christchurch is a vibrant destination in transition to cope with increased tourist activity. As the largest city in the South Island, it is the southern centre of commerce, creativity, and entertainment. Room night demand in Christchurch has increased significantly as a result of growth in both international tourism and domestic travel. There are 76 Hotel Units and 23 Residential Units available for sale, which offers plenty of opportunity for interested purchasers to get involved. Talk your agents NOW!

## RAMADA QUEENSTOWN

With the convenience of a central location combined with stunning views of the lake and mountains close by, buyers have the best of both worlds. Steel to roof is now complete and all levels are now poured. Internal services are progressing well. The Penthouse Units are SOLD OUT and with only 11 Serviced Apartments available for sale, we encourage interested parties to buy NOW!



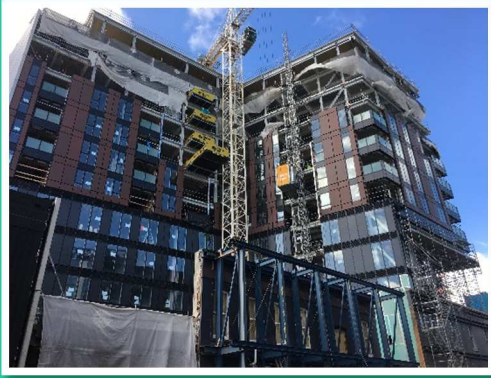
## RAMADA MANUKAU

The team has done a great job as the roof is now on at Ramada Manukau! We are one step closer to seeing the building completed. All services completed baring the fibre and water meter installation which is being worked on. The Hotel Units are SOLD OUT! All that remain are 14 Residential Units and 2 Retail Units to be leased and sold.

## RAMADA KAWARAU RIVER

The Land Use Consent and Structural Consents have now been approved. The structural steel subcontractors have now been appointed and the review of shop drawings is underway. There are now only 13 Hotel Units and 18 Residential Units remaining for sale. BE QUICK as these will not be available much longer at this rate!



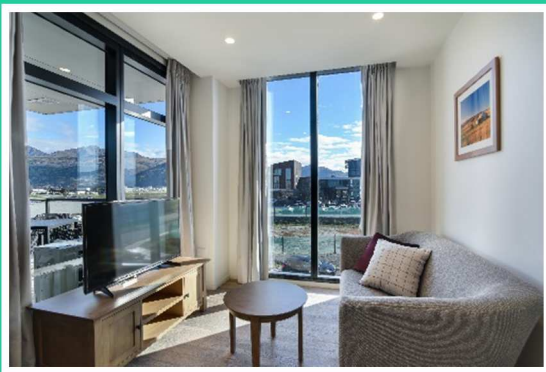


## RAMADA VICTORIA

All levels have now been poured and the structural steel is underway. We also have some exciting news, we have lodged our application for the Transitional Exemption which can open up more opportunities for our overseas purchasers wanting to get involved in this impressive development. With all the Hotel Units sold we have exciting news! We now have 6 Residential Apartments remaining from the 8 released back to the market last month. DON'T MISS OUT!

## RAMADA NEWMARKET

Structural consent has now been approved. Non-residents are still able to purchase AND reside in the residential units in this development due to our application for transition exemption being lodged. There are 30 Residential Units available for sale. Due to popular demand we have reconfigured Level 5 Residential Units into a Hotel Floor and out of the 21 Hotel Units released we now have ONLY 7 left for sale. At this rate you will miss out if you don't act NOW!



## WYNDHAM GARDEN QUEENSTOWN

For anyone still interested in this development there are also 4 Retail Units available for lease and sale. With Franks Pantry (under lease) operational for over a year now and the business thriving, it stands as a success story for our Retail Units. Note that this Retail Unit is also available for sale with the lease in place. We have SOLD OUT of Hotel and Residential Apartments.

## RAMADA ALBANY

We only have 2 Retail Units available for sale and 3 for lease. These Retail Units are proof of the great investment opportunity that can be made in a rapidly expanding area. Also available to our purchasers are 1 carpark and 5 storage units for lease or sale so please let us know if you are interested.



Singapore Agents -  
French District -  
NZ Agents -  
Shirlina Li -  
Don Ha -  
Century21 -  
Barfoot & Thompson -  
Barfoot & Thompson -  
James Law Realty -  
Positive Real Estate -  
Queenstown -  
Mary-Jo Hudson -  
China -  
Retail -

Brooke International (Residential) PTE Limited – [brookeintl@pacific.net.sg](mailto:brookeintl@pacific.net.sg)  
Domaines – [info@domaines.co.nz](mailto:info@domaines.co.nz)  
Nev Suckling – [nevs@safarigroup.co.nz](mailto:nevs@safarigroup.co.nz)  
[shirlinal@safarigroup.co.nz](mailto:shirlinal@safarigroup.co.nz)  
[salesrevolution@remax.co.nz](mailto:salesrevolution@remax.co.nz)  
[ivan.rankich@century21.co.nz](mailto:ivan.rankich@century21.co.nz)  
[g.zeng@barfoot.co.nz](mailto:g.zeng@barfoot.co.nz)  
[r.oliver@barfoot.co.nz](mailto:r.oliver@barfoot.co.nz)  
[michaelc@jameslaw.co.nz](mailto:michaelc@jameslaw.co.nz)  
[Rochelle.degrev@positiverelestate.co.nz](mailto:Rochelle.degrev@positiverelestate.co.nz)  
John Leith – [john.leith@raywhite.com](mailto:john.leith@raywhite.com)  
[maryjo.hudson@colliersotago.com](mailto:maryjo.hudson@colliersotago.com)  
Ausin Group - [Lance.Judson@ausingroup.co.nz](mailto:Lance.Judson@ausingroup.co.nz)  
Ranesh Parmar – [Ranesh.Parmar@ap.jill.com](mailto:Ranesh.Parmar@ap.jill.com)



[www.propertyinvest.net.nz](http://www.propertyinvest.net.nz)  
[www.safarigroup.co.nz](http://www.safarigroup.co.nz)

[f/SafariGroupNZLtd](https://www.facebook.com/SafariGroupNZLtd)